

ColorCAMM



# Mille Gateaux

Manager  
Roger Williams





## ***Finally, a creative tool that exceeds your imagination.***

The remarkable ColorCamm PC-12 not only produces crisp, high-resolution graphics, it contour cuts them for you. This highly effective device combines state-of-the-art thermal transfer printing technology with high precision contour cutting capabilities and easy-to-use plug-and-play software, Roland ColorChoice®, to create a printer/cutter that is surprisingly versatile and affordable. Thanks to the thermal transfer process, which uses heat to fuse the inks into the material, labels, decals and signage exhibit vibrant color and durability without lamination. Perfect for short-run decals, labels, awards, indoor and outdoor signage, product personalization, apparel decoration and comps, the PC-12 is an indispensable creative tool for a variety of businesses.

### ***The Versatile PC-12 is Cut Out for Anything***



The PC-12 cuts everything from traditional rectangular labels to intricate text, arcs and curves with precision and ease. Simply create your design using your favorite graphics software program and add cut lines. The PC-12 will then precision contour cut your design directly out of vinyl or heat transfer material. The maximum cutting size for the PC-12 is 12.7 inches wide by 78 inches long. The PC-12 unlocks your creativity and enables you to present new ideas with a look and feel that is decidedly professional, but at a cost that is remarkably affordable.

### ***Small Desktop Footprint***

The PC-12 is big on versatility and small on size. In fact, its small footprint makes this multi-tasking printer/cutter ideal anywhere that space is at a premium, such as a home office or small business.

### ***Wax and Resin Ink Cartridges Produce Endless Variety***



A choice of wax or resin ink cartridges opens up a wide range of possibilities. Wax inks enable variable dot printing for eye-popping, photo-quality signage, comps or heat transfer decals at 1200 dpi. In addition to standard cyan, magenta, yellow and black (CMYK), gold and silver foils and gloss finish ribbons are available. Using resin inks, the PC-12 produces high-impact, 600 dpi graphics that are water-, fade- and scratch-resistant, making them ideal for both indoor and outdoor applications. Resin ink colors include CMYK, plus spot red, white and blue and metallic gold and silver.





**Professional Results Right Out of the Box**



Expertise with graphic design software is not required to use the PC-12. Professional quality printing and cutting, including precision color management, is made possible with the powerful Roland ColorChoice® software RIP, which comes standard with every PC-12. ColorChoice is a production manager that protects the color fidelity of your graphics and enables you to control printing and cutting directly from your favorite Windows® and Mac design applications such as CorelDRAW®, PhotoShop® and Illustrator®.

**9 Ink Cartridges Offer Increased Convenience and Flexibility**

With the PC-12's nine-ink cartridge capacity and Automatic Cartridge Sensing (ACS) technology, users can load a full accompaniment of spot colors in addition to traditional CMYK, load more cartridges of a most-used color, or load both resin and wax inks at the same time. Each ink cartridge features a bar code that identifies both the ink color and the ink type. This enables the PC-12 to identify which ink cartridges are needed to complete a specific project. And, if a cartridge runs out of ink, the PC-12 will pause the job until the used cartridge is replaced with a new one, then resume work with no loss in product quality.

**Simple, Plug-and-Play Connectivity**



Two of the most important hallmarks of all Roland products are easy set-up and user-friendly operation. The ColorCAMM PC-12 offers plug-and-play connectivity with both Windows® and Mac-based operating platforms. USB or parallel interface makes connecting easy. Simply take the PC-12 out of the box, snap in your ink cartridges, install Roland ColorChoice from the CD, and you're ready to print and cut.

**More Advanced Features**

The PC-12 includes an automatic sheet cutter for separating roll-fed jobs after printing. It also incorporates a built-in optical registration feature which recognizes printed crop marks so you can remove media after printing and then reinsert it for cutting, even after lamination.

**Label Making Made Easy**



**1 Create Your Design**

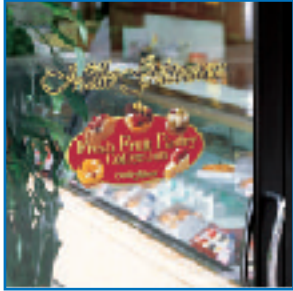
Compose your layout in your favorite Windows or Mac graphics application. Add cut lines.

**2 Select "Print"**

Roland ColorChoice makes selecting your settings – from the number of prints to enlargements and reductions – effortless.

**3 ColorCAMM Does the Rest**

Once the print function is complete, the ColorCAMM PC-12 automatically cuts out your design.



**Signs and Decals**



**Labels and Packaging**



**Point-of-Sale Displays**



**Apparel Decoration**

Specifications	ColorCamm Model PC-12
<b>Printing method</b>	Thermal transfer, resin or wax cartridges
<b>Maximum printing resolution</b>	1,200 dpi (wax ink), 600 dpi (resin ink)
<b>Cutting resolution</b>	0.000984"/step (0.025mm /step)
<b>Printing speed</b>	Maximum 9.921"/sec (252 mm/sec.)
<b>Roland ColorChoice® for PC-12</b>	Adobe® PostScript® 3, Multi-platform RIP (Windows®, Macintosh®)
<b>Cutting speed</b>	Maximum 1.5748"/sec. (40 mm/sec.)
<b>Acceptable media widths</b>	5-5/16" - 13" (150 mm - 330.2 mm)
<b>Maximum work area</b>	12-11/16" x 78-11/16" (323.4 mm x 2,000 mm)
<b>Acceptable media type</b>	Vinyl-chloride media, synthetic-paper media (thickness = 0.0028" - 0.0087" [0.07 mm - 0.22 mm])
<b>Number of installed cartridges</b>	9
<b>Cutter force</b>	30gf - 200gf
<b>Interface</b>	Bi-direction parallel (IEEE1284 / nibble mode), USB (Universal Serial Bus Specification Revision 1.1)
<b>Memory</b>	800 kbyte
<b>Primary power source</b>	Universal AC 85V - 276V 50/60Hz
<b>Dimensions (with media base)</b>	22-3/8" (W) x 17-1/4" (D) x 8" (H) [568 mm (W) x 438 mm (D) x 202 mm (H)]
<b>Weight (with media base)</b>	22 lb (10.0 kg)
<b>Operating temperature</b>	59 - 86°F ( 15-30°C)
<b>Operating humidity</b>	30% - 70% (non-condensing)
<b>Accessories included</b>	PC-12 ColorCamm driver for Windows® CD, media base, media cover, power cord, ink ribbon cartridge (resin), test-use media, cleaning pads, media blade, blade holder, head cleaner, Roland ColorChoice® for PC-12 CD, user's manual

**Roland**  
Get it right on a Roland



**ColorCamm Model PC-12**

Maximum media acceptance: 13 inches (330.2 mm)

Maximum print/cut area: 12-11/16" x 78-11/16" (323.4 mm x 2,000 mm)